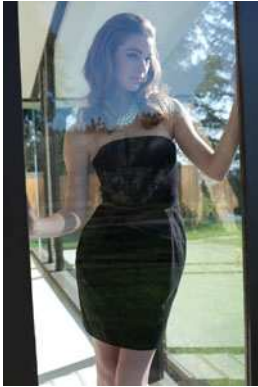


Thumbnails from Plum's Spring 2010 Media Kit. Contact Katie O'Brien 604-808-1331 kate@plum.ca for high resolution images.



TOBIAS BELTED SHEATH DRESS WITH POCKETS
\$110
SIZES 2-14



SIMONE STRAPLESS TULIP DRESS
\$115
SIZES 2-12



SIMONE SLEEVELESS DRESS W/EXPOSED TWO
WAY ZIPPER
\$110
SIZES 2-14



SIMONE DRESS WITH PLEATED WAIST AND
POCKETS
\$115
SIZES 2-14

Thumbnails from Plum's Spring 2010 Media Kit. Contact Katie O'Brien 604-808-1331 kate@plum.ca for high resolution images.



SIMONE SUNDRESS WITH BUTTON FRONT &
POCKETS
\$95
SIZES XS-XL



TOBIAS ¾ SLEEVE COAT WITH GATHERED WAIST
\$190
SIZES 2-14



TOBIAS CLASSIC SHEATH DRESS
\$98
SIZES 2-14



TOBIAS SUIT JACKET WITH GATHERED DETAIL
\$165
SIZES 2-14
TOBIAS HIGH WAISTED PENCIL SKIRT
\$79
SIZES 2-14